

## **SPLIT Index**

The Index contains a list of all Help topics available for the SPLIT program.

For information on how to use Help, press **F1** or choose **Using Help** from the Help menu.

[Licensing, registration and evaluation information](#)  
[Registration / Order Form](#)

### **Main Topics:**

[Introduction](#)  
[SPLIT Working Principles](#)  
[Zooming](#)  
[Printing](#)  
[Exporting](#)  
[About Text Filter](#)  
[Pen Identification](#)  
[Notes](#)

### **Menus, Commands, Dialogs:**

[File](#)  
[Options](#)  
[View](#)  
[Resize](#)  
[Zoom](#)  
[Expand](#)  
[Help](#)

### **Keyboard:**

[Keyboard Shortcuts](#)

## Licensing, registration and evaluation information

SPLIT is distributed as "**Shareware**" or "User Supported Software" and is fully copyrighted. If you register the program you will receive these benefits:

- 1) The latest version of SPLIT.
- 2) A printed user's manual.
- 3) A printed technical reference which describes all plotter instructions supported by SPLIT.
- 4) An end to the nag screens and opening banners.
- 5) Deep discounts on the next major versions.

The single user registration fee for SPLIT for Windows is **\$65.00** (US funds). The multisystem site fee for SPLIT is **\$140.00**. Users outside of Europe should include an additional **\$5.00** for international airmail.

Author can accept payment in these three ways:

- 1) In cash (money enclosed) - this is the most quick method, but at your risk.
- 2) Credit card - **MasterCard, VISA** and **American Express** are accepted. Please, fill out carefully the credit card information in the Registration / Order Form.
- 3) Bank or travelers cheque enclosed - please make a cheque payable in US funds.

Since the SPLIT program is always distributed with a DLL library (libraries) adapted for a certain plotter type, do not forget to mention the plotter type with which you want to use the SPLIT program. A list of plotters you can choose from is given in the PLOTTERS.TXT file. In this file there are also given the parameters of these plotters together with a list of supported instructions. It makes possible to choose a suitable plotter type even if your plotter is not listed (most plotters are compatible with some plotter from the list). Of course, you can order SPLIT program with more DLL libraries for different plotter types. In this case the single user registration fee for any further DLL library is \$20.00 (+ \$5.00 outside Europe) and the multisystem site fee is \$40.00 (+ \$5.00 outside Europe). This principle is also valid for an upgrade. If you have registered at least one SPLIT program version at the full price of \$65.00 (\$140.00), now and in the future only \$20.00 (\$40.00) is to be paid for all other versions.

Special offer:

Registered users of the MS-DOS version of the SPLIT program can order the MS-Windows version for **\$45.00** only (**\$95.00** for the multisystem site licence) (+ \$5.00 outside Europe). In this case fill out your serial number in order form and mark it as 'upgrade from DOS version'.

Note: The latest MS-DOS version of the SPLIT program is available on all SIMTEL20 archives in <MSDOS.GRAPHICS> directory as SPLTXXX.ZIP file (recently SPLT250.ZIP).

To register, please use the Registration / Order Form supplied with this package (also provided in the file ORDER.TXT). Please send the completed form along with a payment to:

Alexandr Novy  
Havlickova 2209  
390 01 TABOR  
Czech Republic

NOTE: Czech users of SPLIT should contact Czech distributor, SOFTECH, P.O.B. 69, 323 00 Plzen 23, Czech Republic, Tel./Fax 0042-19-226294. A special Czech language version of

the package is available from them as well.

## **EVALUATION AGREEMENT**

SPLIT is not and has never been public domain software, nor is it free software.

Non-licensed users are granted a limited license to use SPLIT on a 14-day trial basis for the purpose of determining whether SPLIT is suitable for their needs. The use of SPLIT, except for the initial 14-day trial, requires registration. The use of unlicensed copies of SPLIT by any person, business, corporation or any other entity is strictly prohibited.

No one may modify or patch the SPLIT executable file in any way, including but not limited to decompiling, disassembling, or otherwise reverse engineering the program.

A limited license is granted to copy and distribute SPLIT only for the trial use of others, subject to the above limitations, and also the following:

- 1)** SPLIT must be copied in unmodified form, complete with the file containing this license information.
- 2)** The full machine-readable SPLIT documentation must be included with each copy.
- 3)** SPLIT may not be distributed in conjunction with any other product without a specific license to do so from author.
- 4)** No fee, charge, or other compensation may be requested or accepted, except as authorized below:
  - a)** Operators of electronic bulletin board systems (sysops) may make SPLIT available for downloading as long as the above conditions are met. An overall or time-dependent charge for the use of the bulletin board system is permitted as long as there is not a specific charge for the download of SPLIT.
  - b)** Vendors of user-supported or shareware software may distribute SPLIT after obtaining written permission from author. Such permission is usually granted. Vendors may charge a reasonable disk duplication and handling fee.

## **LICENSING AGREEMENT**

Licensed user are bound to the following licensing agreement.

You may not transfer your license without written permission from author. A single user license permits a user to use SPLIT only on a single computer at a time.

This product is distributed AS IS. The author specifically disclaims all warranties, expressed or implied, including, but not limited to, implied warranties of merchantability and fitness for a particular purpose with respect to defects in the diskette and documentation, and program license granted herein, in particular, without limiting operation of the program license with respect to any use or purpose. In no event shall the author be liable for any loss of profit or damage including but not limited to special, incidental, consequential or other damages.

By licensing SPLIT you agree to the above licensing agreement.

## **How to register**

To register, study [Licensing, registration and evaluation information](#) and send completed [Registration / Order Form](#) (also provided in the file ORDER.TXT) along with payment to:

Alexandr Novy  
Havlickova 2209  
390 01 TABOR  
Czech Republic

If you experience any problems, please let me know.

E-mail:

Bitnet:     novy@csearn  
Internet:  novy@earn.cvut.cs

## Order Form for SPLOT - The Pen Plotter Simulator for Windows

Select "File-Print Topic" from the menu bar to print this form.

Your Name: \_\_\_\_\_

Company: \_\_\_\_\_

Address: \_\_\_\_\_

City: \_\_\_\_\_ Prov/State: \_\_\_\_\_

Country: \_\_\_\_\_ ZIP/Postal: \_\_\_\_\_

If you are registered user already, your serial number: \_\_\_\_\_

Licence:      single user                    multisystem site

Disk:        5 1/4 inch      3 1/2 inch

Payment:     Cash (money enclosed)  
               Credit card (fill out credit card information below)  
               Bank or travelers cheque (payable in US funds)

I'd like to order the SPLOT program for the following plotter type(s):

HP 7470A ..... \_\_\_\_\_ \$

HP 7475A ..... \_\_\_\_\_ \$

HP 7440A ColorPro ..... \_\_\_\_\_ \$

HP 7550A ..... \_\_\_\_\_ \$

HP DraftPro ..... \_\_\_\_\_ \$

HP DraftMaster ..... \_\_\_\_\_ \$

Roland DXY ..... \_\_\_\_\_ \$

Shipping (Outside Europe) ..... \_\_\_\_\_ \$

TOTAL AMOUNT ..... \_\_\_\_\_ \$

I hereby authorize the above amount to be charged to my

MasterCard        VISA            American Express

Name as it appears on card: \_\_\_\_\_

Credit card number: \_\_\_\_\_ Expiration date: \_\_\_\_\_

Signature: \_\_\_\_\_

Your comments: \_\_\_\_\_

\_\_\_\_\_

\_\_\_\_\_ (add any additional comments you wish separately)

Mail this form to:       Alexandr Novy  
                              Havlickova 2209  
                              390 01 TABOR  
                              Czech Republic



## Introduction

The SPLOT program is a highly effective tool intended for simulating the pen plotter on the display of an IBM PC. The SPLOT program is the very thing you need to make your work with the plotter more effective. The SPLOT program will give you a guarantee you will always draw on your plotter what you really want. That is why it will save your nerves, your time, your plotter, pens and paper, that means your money.

The SPLOT program can offer:

- active support of about 50 HP-GL instructions (according to the type of simulated plotter).
- active support of 20 DXY-GL instructions (for ROLAND plotters).
- possibility of exporting a picture to the printer and in this way to obtain an output of a high quality. In this way the SPLOT program will make a fast and excellent plotter of your printer.
- exporting a picture to the HP-GL, DXY-GL and DXF formats.- possibility of making picture cuts (the ZOOM function). In this way you can scan, draw on the plotter or print only the selected part of the picture.
- to teach your plotter the advanced instructions you would get only if you buy a more expensive plotter or additional hardware (e.g., the SPLOT program can simulate connecting an additional HP 17440A graphics enhancement cartridge to the HP 7440A ColorPro plotter).
- possibility of processing a HP-GL text including multilingual characters - in this way the SPLOT program will teach your plotter German (Spanish, French, etc.) easily and quickly without complicated switching between character sets!

The SPLOT program can be used by:

- anybody who wants to work with his plotter in the WYSIWYG style (What You See Is What You Get).
- anybody who wants to develop his own plotter program applications. You can reach it with the SPLOT program easily even if you do not own the plotter at all!
- anybody who wants to use his printer as a plotter occasionally or constantly. In many cases using a printer may be faster and moreover, this may be an alternative of a high quality.
- anybody who wants to program a printer in graphics mode and at a high level and who does not want to develop complicated software which would enable it. In these cases using the HP-GL language in connection with the SPLOT program seems to be very advantageous for creating own graphics outputs. The HP-GL language can be learned very easily and in addition, it offers unexpected possibilities.

The SPLOT program is available for various plotter versions. This means that there are provided DLL modules designated for a certain plotter type. This principle gives the maximum reliability of simulation of the given plotter type. At present the DLL modules for the following plotter types are at your disposal:

(Plotter type / Plotter syntax / Module name)

- ROLAND DXY 1100/1200/1300 / DXY-GL / RD-GL I / ROLAND.DLL
- HP 7470A / HP-GL / HP7470.DLL
- HP 7475A / HP-GL / HP7475.DLL
- HP 7440A ColorPro / HP-GL / HP7440.DLL
- HP 7550A / HP-GL / HP7550.DLL
- HP 7570A/7575A/7576A DraftPro DXL/EXL / HP-GL / HP7570.DLL
- HP 7595A/7596A DraftMaster I/II / HP-GL / HP7595.DLL

An UNREGISTERED COPY of the program is available only in the version for the HP 7475A plotter. The versions for other plotter types can be received only on the basis of regular

registration. See the [Licensing, registration and evaluation information](#).



## **SPLIT Working Principles**

The plotter simulation consists in interpreting plotter instructions contained in a disk file. The SPLIT program reads these instructions from the file and plots them on the screen of the computer in the same way as the plotter would do on paper. The file is plotted in the window (drawing area) which represents the plotting paper of the plotter. The boundaries of this drawing area normally correspond to the hard clip limits of the plotter (i. e., to the physical limits in which a plotter pen can move for the selected paper size). If the ZOOM function is used, only the chosen plotting area is displayed in this drawing area.

In the Microsoft Windows environment the size of the drawing area can differ from the size of the client area. If any dimension of the client area is larger than those of the drawing area, the superfluous area of the client area is gray colored. The color of the drawing area (paper) is always white. If any dimension of the client area is smaller than those of the drawing area, one or two scroll bars appear on the edge of the client area, which allow you to scroll through the contents of the drawing area. Use the Resize menu command to cause the equality of the client and drawing areas. This equality is maintained automatically if the Dynamically Resize item in the Options menu is checked. If the Proportional Aspect Ratio item in the Options menu is checked, the aspect ratio of the drawing area is maintained to be identical to the aspect ratio of the selected paper size (see the Paper Size dialog). Otherwise there can be any aspect ratio of the drawing area which can lead to the deformation of the image.

## Zooming

With the mouse cursor you can make and enlarge the chosen cuts of the plotted image. By pressing the left mouse button in the drawing area you define first corner of the zooming box. The next mouse movement expands and contracts the zooming box around the area you desire to enlarge. The colors of the zooming box area are inverted. If you press the right mouse button with the left mouse button simultaneously or the **Shift** key is pressed, the box moves as a whole. Until you have the left or right mouse button depressed, you are in the zooming box definition mode in which you define the size and position of the zooming box. As soon as the zooming box of any size is defined you can use the Zoom menu command to start zooming. If you have a three button mouse with appropriate mouse driver installed, you can use the middle button to start zooming too. The zooming starts automatically if the Dynamically Zoom item in the Options menu is checked.

The zooming is performed so that the selected zooming box is enlarged to the entire drawing area (note that the size of the screen drawing area is changed only through the Resize menu command or automatically with the change of the size of the client area if the Dynamically Resize item in the Options menu is checked). If the Proportional Aspect Ratio item in the Options menu is checked, the aspect ratio of the displayed cut is identical to the aspect ratio of the selected paper size (see the Paper Size dialog), regardless of the aspect ratio of the selected cut. To ensure proportional aspect ratio of the displayed cut the size of the displayed cut area is usually larger than the size of the selected cut area. If the Proportional Aspect Ratio item in the Options menu is not checked, the selected cut area is always identical to the displayed cut area and is fitted to the entire drawing area. This usually leads to the deformation of the displayed image.

To expand the picture into the original size press the **Tab** key or use the Expand menu command or press the middle mouse button if you have any.

You can change the size and position of the already defined zooming box if the Dynamically Zoom menu item is not checked. To do this press the right mouse button in the drawing area. Then you can change the position of the zooming box. To change the size of the zooming box press simultaneously the left button and then release right button.

Another purpose of the zooming box is to select a part of the picture for printing or exporting (see the Print or Export dialog for details) or for copying to clipboard (see the Copy Image to Clipboard command). Note that the Dynamically Zoom menu item must not be checked for that purpose.

## **Printing**

The SPLOT program enables to print the opened file using an installed Windows printer driver. Note that drivers for commonly used printers are supplied directly with your Windows package. Contact your printer vendor if you don't have a driver for your printer. Note that the printer term represents any output device (printer, plotter).

To start printing use the Print dialog which allows you to set final properties for a individual print job. You can set the other properties in the Print Setup dialog.

## Exporting

The SPLOT program enables to export the opened file to the following formats:

**HP-GL** - Hewlett-Packard Graphics Language - the commonly used plotter format,  
**DXY-GL** - the format specific to ROLAND DXY plotters,  
**DXF** - the AutoCAD's drawing interchange file format.

The **HP-GL** format can be employed, for example, for plotting a picture cut on the plotter, for the output of a multilingual text on the plotter (see the [About Text Filter](#) topic), or in case your plotter does not support all the HP-GL commands supported by the SPLOT program. The last case is characteristic especially of the situation you own the HP ColorPro 7440A plotter and you have not the additional graphics enhancement cartridge HP 17440A. Note that you can use a Windows HP-GL printer driver to produce a HP-GL output too (see the [Printing](#) topic), but this is usually slower method.

The **DXY-GL** format realizes the export of a picture to the DXY plotter (usually the ROLAND plotter).

The **DXF** format converts a picture to a form applicable by the AutoCAD program. From AutoCAD you can read this DXF file via the DXFIN command. The exported picture is written in the form of LINES where each pen of the plotter has its own LAYER. Pen 1 has a layer with the name PEN1, pen 2 has a layer with the name PEN2, etc.

To start and configure exporting use the [Export](#) dialog box.

## About Text Filter

The SPLOT program is able to process a multilingual text in your HP-GL (or DXY-GL) files. As known, plotters receive only the ASCII characters in the range of 0 to 127. Therefore, if the instruction for the output of the text (LB at HP-GL and P at DXY-GL resp.) contains the ASCII characters with the value higher than 127, the plotter will not draw them or will ignore the highest bit of characters and will draw the corresponding characters from the lower half of the ASCII table. For example, if you use the following statement in GW-BASIC (handle #1 represents the plotter),

```
PRINT #1, "LBGröße";CHR$(3)
```

the plotter will draw only the text

Gre or Grae respectively.

If you want to draw the text correctly, you have to use the following statements, e.g.:

```
PRINT #1, "CS0;CA33;SS;LBGr";CHR$(3)
```

```
PRINT #1, "SA;LB|~";CHR$(3)
```

```
PRINT #1, "SS;LBe;CHR$(3)
```

However, e.g., if you own the HP ColorPro 7440A plotter without an additional HP 17440A graphics cartridge, it will not help you either.

The above mentioned example concerns the use of a German text, but similar problems occur also in other languages which use the ASCII characters from the upper half of the table.

Therefore, the SPLOT program offers the Text Filter function. You switch on this function by checking the Text Filter item in the Options menu. Then all the ASCII characters from the value of **128 to 175** and **ß** character will be plotted according to the selected Code Page. And it does not matter what character set of the plotter is just set. This will enable to write multilingual texts in your HP-GL (DXY-GL) files directly without complicated switching of character sets. The HP-GL (DXY-GL) file created in this way must be exported to a new HP-GL (DXY-GL) form through the HP-GL (DXY-GL) export with the Text Filter switched on, and only such a newly originated file can be drawn on the plotter. Or you can print the image directly to the plotter if you have an appropriate Windows plotter driver installed. (For details about exporting and printing see the Exporting and Printing topics or the Export and Print dialogs).

To demonstrate using this method of writing multilingual texts we recommend you to study over the enclosed demonstration file ASCII.PLT and display it at first with the Text Filter being switched **off** and then **on**.

## Pen Identification

The identification of pens serves to emphasizing parts of the picture drawn with the same pen and to informing about the number of pens used during drawing the given picture. This information is useful namely for the correct loading of the plotter pens in case you decide to draw the given picture on the plotter.

The following conditions must be accomplished if you want to emphasize a part of the picture drawn with the same pen:

- the installed Windows video driver must support a logical palette with at least 16 items (usually a Super VGA video driver for a 256 colors mode),
- the Use Logical Palette item in the Options menu must be checked and must not be disabled (it is disabled if the preceded condition is not valid),
- the Pen Panel window must be opened (i.e., the Pen Panel item in the View menu must be checked).

Then if you click on the desired Pen Icon on the Pen Panel, a part of the picture drawn by the corresponding pen will begin to flash and it will be flashing until you click another pen icon or if you do not cancel the identification by clicking the same pen icon. Note that a double-click on a pen icon invokes the Pen Colors dialog for editing of the corresponding pen color.

The another purpose of the Pen Panel is to identify the numbers of pens used during drawing the picture. At the beginning of drawing all the pen numbers are grayed, during drawing the number corresponding with the pen just being used is highlighted, after finishing drawing all the numbers corresponding with all the used pens are highlighted so that all the unused pen numbers remain grayed.

## Notes

1)

When the SPLOT program is started, it is in the state corresponding with the state of the simulated plotter just switched on. When coming to plotting a new file, the program performs only the operation of changing paper. In this case the program (plotter) is in the state in which it has been left by the commands of the previous file. That is why it is generally recommended to place an initiating command sequence to the beginning of each file. It will bring the plotter to the well known state. Otherwise it can happen that the same file can be drawn in another way every time, dependently of the contents of the previous plotted files. The author recommends to use the initiating sequence **IN;RO;IP;IW;** (in some plotters the **IN** command does not influence the setting of rotation).

In other cases the program is brought to the state corresponding with the switching off and on the plotter in these cases:

- at change of plotter type,
- at any change of the format or the paper size,
- at any change of any parameter in the Plotter Specific Options... dialog

2)

After finishing the SPLOT program saves the important parameters (a palette of colors for pens, a paper size, pen widths, etc.) in the SPLOTW.INI file in the directory in which the program EXE file is situated. When starting the first instance of the SPLOT program, the SPLOTW.INI file is used for resetting these parameters. The options for next instances are copied from a previous instance. If you want to set a permanent configuration of the program which will not be changed, set **on** the READ ONLY attribute of SPLOTW.INI file.

## **File Menu**

The File menu includes commands that enable you to open and view a plotter file and to print or export the opened file.

Open...

Redraw

Start Demo/End Demo

Print...

Print Setup...

Export...

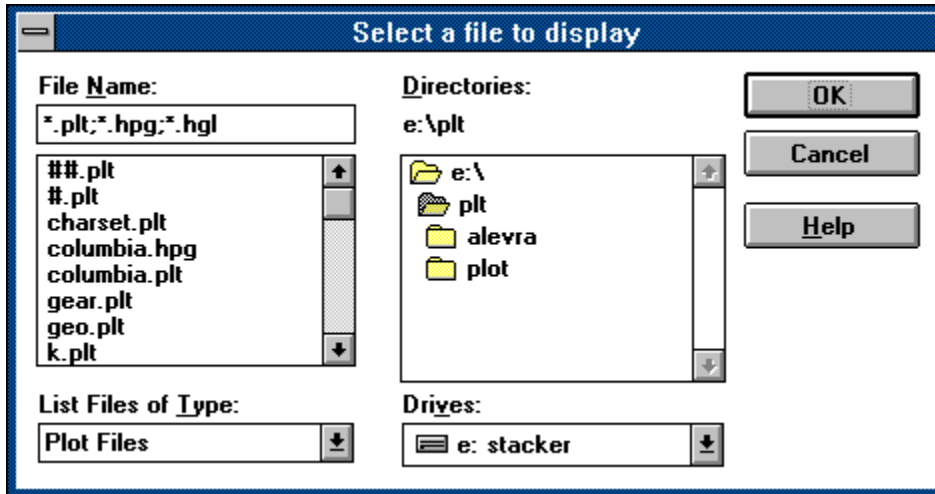
Exit



## Open Dialog

This dialog serves for opening a desired plot file. Once a new file is opened the SPLOT program closes a previous plot file (if any) and begins drawing with new plot file. The opened file is drawn until the end of file is reached or another new file is opened.

Click on an individual control to get more information about the Open dialog:



**OK Dialog Button**

Closes the dialog and initiates an associated action. All made changes are accepted.

**Cancel Dialog Button**

Closes the dialog and no action is taken. All made changes are cancelled.

**Help Dialog Button**

Provides help information about this dialog (same as pressing F1 key).

**File Name Text Box Control**

You can type here a file name, a filter, a drive, a directory or a complete path.

**File Name List Box Control**




This list box shows the existing files of the desired type in the current working directory. Selecting from the list replaces the contents of the text box. Selecting via double-click causes plotting of the selected file.

**Directory Tracking Text**

This static text shows the complete path name of the current working directory.

## Directories List Box

The directories list box displays:






- the parent directories, preceded by  icon,
- the current directory, preceded by  icon,
- the child directories of the current directory, preceded by  icon.

The directory icons and names are displayed according to their depth in the directory tree. To move to a directory, double-click the directory name or icon, or select it and then choose OK button (or press ENTER key).



## Drives List Box

This drop-down list box displays the current drive letter followed by the volume name. The drive name is preceded by an appropriate drive icon:

-  floppy disk drive,
-  hard disk drive,
-  RAM disk drive,
-  network drive,
-  CD-ROM drive.

You can select another drive as the current drive from this list.

## **File Type List Box**

This drop-down list serves for selecting a desired type of files. Selecting a type modifies the contents of the files list box so that only files of the selected type are displayed.

These types of file are provided:

**Plot Files** Lists all files in the current directory with a .PLT, .HPG and .HGL extensions.

**All Files (\*.\*)** Lists all files in the current directory.

## **Redraw Command**

This command starts the redrawing of the opened plot file from its beginning.

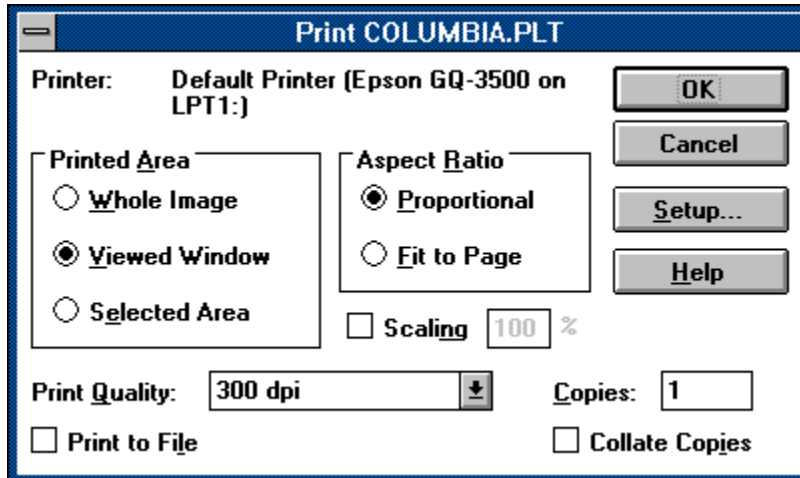
### **Start Demo/End Demo Command**

This command starts/ends a demonstrative drawing of all files with the .PLT extension in the current working directory.

## Print Dialog

The Print dialog allows you to set final properties for a individual print job and start it. You can set the other properties in the [Print Setup...](#) dialog.

Click on an individual control to get more information about the Print dialog:



**Target Printer**

This text informs you about the printer on which the printing will be performed.

**Printed Area**

This control determines which part of the drawing area will be printed:

**Whole Image** - the entire drawing area will be printed.

**Viewed Window** - only the intersection of the drawing and client areas will be printed (can be checked only when any dimension of the drawing area is larger than those of the client area).

**Selected Area** - the inverted area (area marked for zooming) will be printed.

**Aspect Ratio**

This control determines the aspect ratio of the printed image:

**Proportional** - the aspect ratio of the printed image will be identical to the original aspect ratio (based on the original plotter page, not on the screen view) of the selected printed area. This option is checked by default if the scaling is **on**. If the scaling is **off**, the maximum possible area size of the printer page will be used. To do this proportionally one of the dimensions (X or Y) is usually reduced.

**Fit to Page** - the printed image will be fitted to the entire area of the printer page. This can lead to the deformation of the image. This option can be checked only if the scaling is **off**.



## Scaling

These controls serve for switching scaling **on** or **off** and for editing the scaling value. Switching the scaling **on** enables you to print in a desired scale; e.g., if you set the scale factor to 100%, the printed output will be in 1:1 scale to the original plotter size. This assumes that the size of the printer page is large enough to hold the scaled image. Switching the scaling **on** automatically switches **on** the proportional aspect ratio of the printed image (see the Aspect Ratio controls). If the scaling is switched **off**, the printed image will be fitted (proportionally or completely) to the maximum possible area size of the printer page.

**Print Quality**

The Print Quality drop-down list box allows you to choose from the list of printing resolutions provided by the printer device driver. This box may be disabled if you use an old version of the printer device driver. In this case use the Options button in the Print Setup dialog (note that old versions of printer device drivers can be set up globally only, i.e., they cannot be set up for one program instance only).

**Number of Copies**

You can specify the desired number of print copies only if the printer device driver supports multiple copies. If the printer device driver does not support multiple copies, the number of copies is set to one and this edit control is disabled.

**Print to File**

If the Print to File check box is checked, a new dialog appears after you press OK and asks for the name of the file to which the print output should be sent. A file created in this way will print properly only on the printer for which it was generated - it is a device-dependent file, not a metafile.

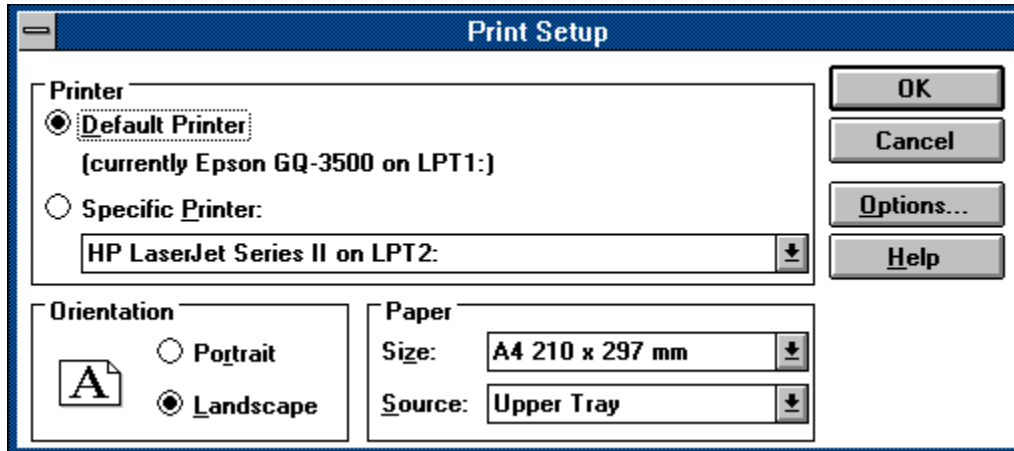
**Collate Copies**

This option is meaningless in SPLIT program because of the print output is designated for one physical page only (this may be changed in future versions of SPLIT).

## Print Setup Dialog

The Print Setup dialog allows you to set printing properties for a subsequent print jobs. These settings are valid only in the SPLOT instance in which they were made. At the start of the SPLOT program a system default printer and its settings are used. Note that certain properties are set in the Print... dialog.

Click on an individual control to get more information about the Print Setup dialog:



**Printer Selection**

The Printer Selection controls allow you to choose a printer on which the plotted file will be printed. The Default Printer button selects the printer established as the default by the system Printer Setup dialog (from Control Panel program). The Specific Printer button along with associated drop-down list box allow you to select another printer for a subsequent print jobs. You can choose only from printers correctly installed in your system. At the start the SPLOT program selects a system default printer for a subsequent print jobs.

**Orientation Selection**

The Orientation Controls allow you to choose portrait or landscape printing. In portrait mode the tops of the graphics are parallel to the short edge of the page. In landscape mode they are parallel to the long edge. If one of the modes is not available for the current printer and paper type, the label and button for that mode are dimmed, and the button for the available mode is selected.

Note that for older versions of printer device drivers this controls may be disabled. In this case use the Options button (note that old versions of printer device drivers can be set up globally only, i.e., they cannot be set up for one program instance only).



**Paper Size and Source Selection**

The Paper Size drop-down list allows you to choose from the list of paper sizes provided by the printer device driver. This list specifies the paper sizes that can be loaded into the printer, not the sizes that are actually loaded at the time of printing.

Note that for older versions of printer device drivers this controls may be disabled. In this case use the Options button (note that old versions of printer device drivers can be set up globally only, i.e., they cannot be set up for one program instance only).

**Options Button**

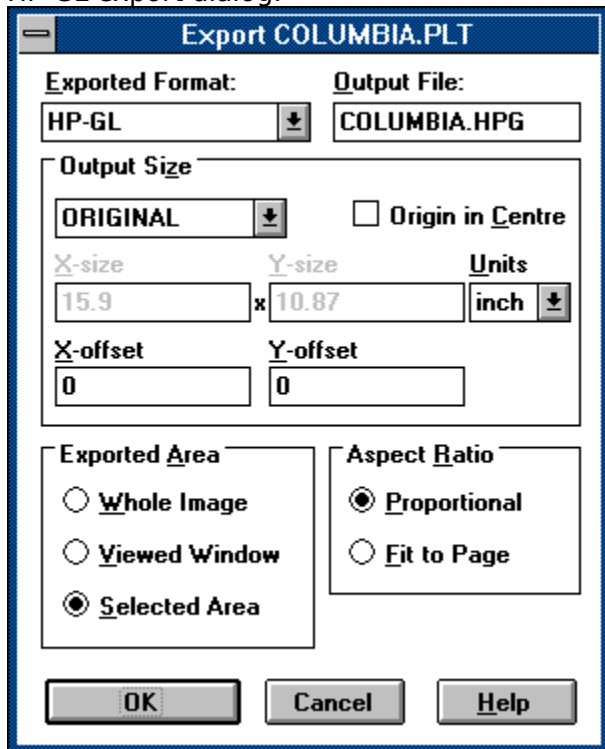
The Options button leads to a dialog that allows you to select additional driver-supplied printing options. This button is disabled if no such options are provided.

## Export Dialog

Use the Export dialog to start and configure exporting. See the [Exporting](#) topic for additional information.

Click on an individual control to get more information about the Export dialog:

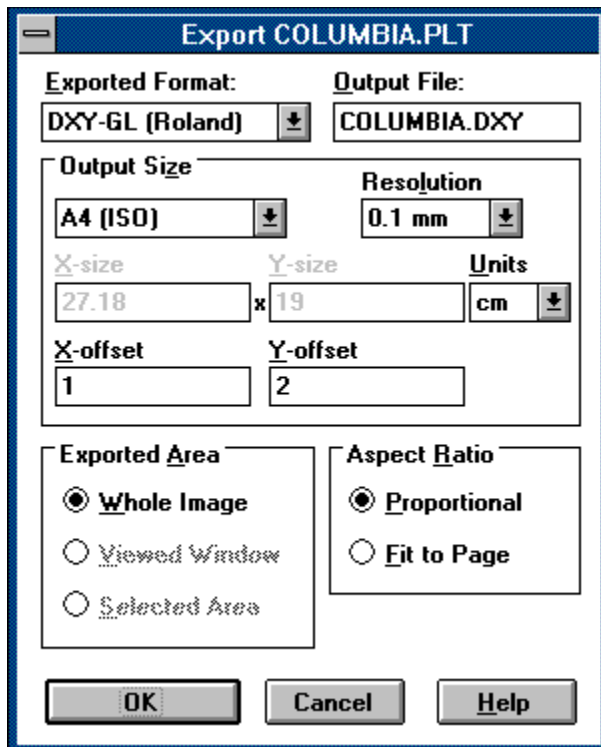
HP-GL export dialog:



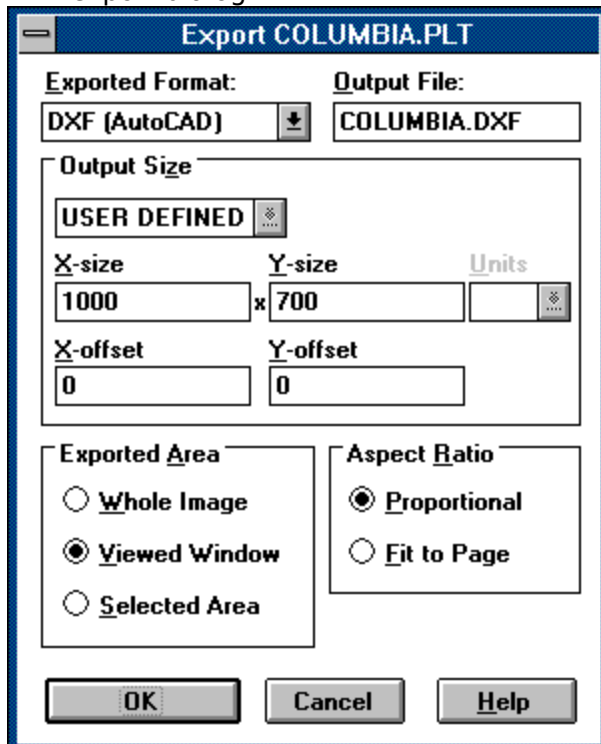
The screenshot shows a dialog box titled "Export COLUMBIA.PLT". It contains the following controls:

- Exported Format:** A dropdown menu set to "HP-GL".
- Output File:** A text field containing "COLUMBIA.HPG".
- Output Size:** A dropdown menu set to "ORIGINAL".
- Origin in Centre**
- X-size:** A text field containing "15.9".
- Y-size:** A text field containing "10.87".
- Units:** A dropdown menu set to "inch".
- X-offset:** A text field containing "0".
- Y-offset:** A text field containing "0".
- Exported Area:** A group box containing three radio buttons: "Whole Image", "Viewed Window", and "Selected Area" (which is selected).
- Aspect Ratio:** A group box containing three radio buttons: "Proportional" (which is selected), "Fit to Page", and "Fit to Page".
- Buttons:** "OK", "Cancel", and "Help".

DXY-GL export dialog:



DXY export dialog:



**Exported Format**

The Exported Format drop-down list allows you to choose from the list of export formats provided by the SPLOT program:

**HP-GL** - Hewlett-Packard Graphics Language - the commonly used plotter format,

**DXY-GL** - the format specific to ROLAND DXY plotters,

**DXF** - the AutoCAD's drawing interchange file format.

For more information see the [Exporting](#) topic.

**Output File**

Type here the name of the file to which the export will be performed.

## **Output Size**

You can select a predefined size or a user defined size. When you select the user defined size you must specify its X and Y dimensions.

The predefined output size **Original** is equal to the original plotter paper size (as specified in the Paper Size dialog). If you use this size for exporting a non-zoomed image, you ensure the 1:1 scale for that export. Note that for the **DXF** export only user defined size is provided.

For all sizes you can specify an offset from the left margin (on the X axis) and from the bottom margin (on the Y axis).

**Origin in Centre**

Check this option only if the resultant HP-GL file is designated for the plotter in which the origin of the coordinate system is situated in the centre of the plotting area (it is usual with large paper size plotters, e.g. HP DraftPro or HP DraftMaster).



**Resolution**

This drop-down list box serves for selecting a plotter unit size for the DXY-GL format. It can be 0.1 or 0.025 mm. Note that for the HP-GL format the plotter unit size is always 0.025 mm.

**Units**

This drop-down list box serves for selecting a desired unit used for the output size measurement. It can be cm (centimetre) or inch. Note that the DXF format is an exception - here the output size is understood in units to be defined in AutoCAD.

**Exported Area**

This control determines which part of the drawing area will be exported:

**Whole Image** - the entire drawing area will be exported.

**Viewed Window** - only the intersection of the drawing and client areas will be exported (can be checked only when any dimension of the drawing area is larger than those of the client area).

**Selected Area** - the inverted area (area marked for zooming) will be exported.

**Aspect Ratio**

This control determines the aspect ratio of the exported image:

**Proportional** - the aspect ratio of the exported image will be identical to the original aspect ratio (based on the original plotter page, not on the screen view) of the selected exported area. To do this one of the dimensions (X or Y) is usually reduced.

**Fit to Page** - the printed image will be exactly fitted to the selected output size. This can lead to the deformation of the image.

**Exit Command**

This command exits the SPLOT program.

## Options Menu

This menu provides access to the SPLOT options. All changed options are saved in the SPLOT initialization file when the SPLOT program terminates.

Plotter Type  
Paper Size...  
Pen Colors...  
Pen Widths...  
Plotter Specific Options...

Language  
Text Filter  
Code Page  
Sound  
Use Logical Palette

Proportional Aspect Ratio  
Dynamically Resize  
Dynamically Zoom

Minimize on Drawing  
Active at End of Drawing

Copy Image to Clipboard

## Plotter Type Menu

The Plotter Type menu serves for selecting a desired plotter type for simulation. You must have the corresponding DLL module:

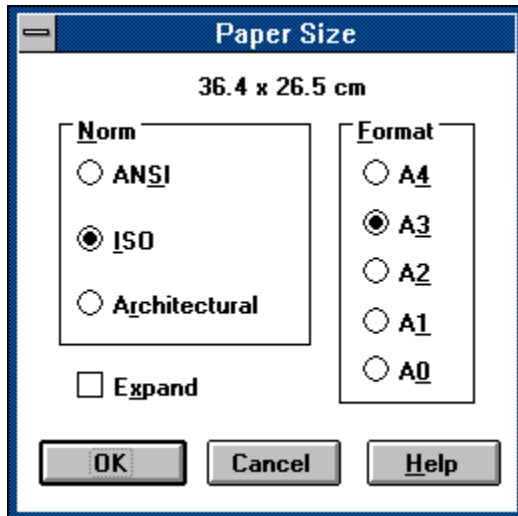
Plotter type	Module name
ROLAND DXY	ROLAND.DLL
HP 7470A	HP7470.DLL
HP 7475A	HP7475.DLL
HP ColorPro	HP7440.DLL
HP 7550A	HP7550.DLL
HP DraftPro	HP7570.DLL
HP DraftMaster	HP7595.DLL

An UNREGISTERED COPY of the program is available only in the version for the HP 7475A plotter. The versions for other plotter types can be received only on the basis of the regular registration. See the [Licensing, registration and evaluation information](#).

## Paper Size Dialog

This dialog serves for selecting one of the supported paper sizes of the just simulated Plotter Type. Each paper size is given by a combination of the Paper Norm, Paper Format and optionally Expand modifier. Note that the selected paper size is represented by the SPLOT drawing area (see the SPLOT Working Principles topic).

Click on an individual control to get more information about the Paper Size dialog:





**Paper Norm**

One of these paper norms can be selected for the desired paper size:

**ISO** - International Standards Organization's norm

**ANSI** - American National Standards Institute's norm

**ARCH** - architectural norm

Note that some plotter types do not support all the paper norms. The unsupported paper norms are disabled.

**Paper Format**

According to the selected paper norm one of these paper formats can be selected for the desired paper size:

**A4, A3, A2, A1** and **A0** formats for the **ISO** norm,

**A, B, C, D** and **E** formats for the **ANSI** and **ARCH** norms.

Note that some plotter types do not support all the paper formats. The unsupported paper formats are disabled.

**Paper Expand**

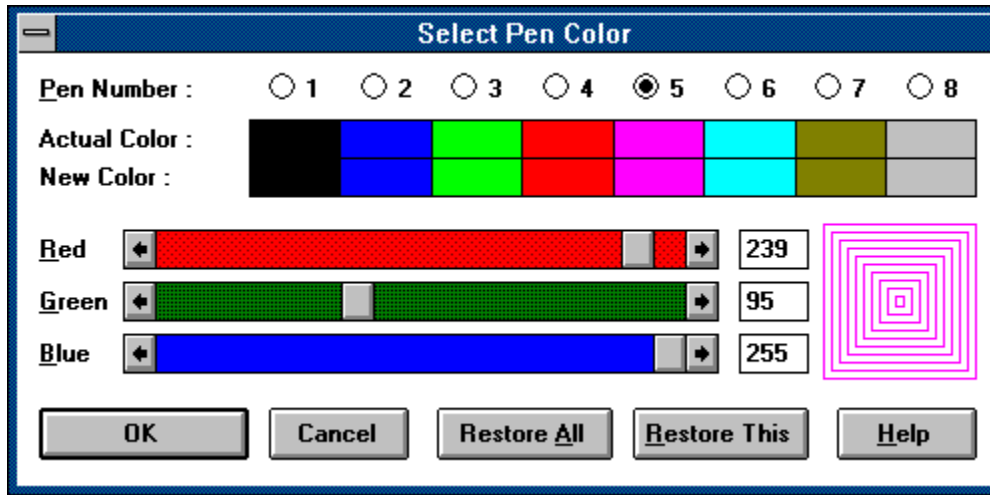
The Paper Expand check-box switches **on** or **off** using of the expanded form of selected paper size. This option is disabled if the just simulated plotter type does not support it.

## Pen Colors Dialog

Use the Pen Colors dialog to change the associated pen colors.

In SPLIT program each pen is associated with certain color. These pen colors are used for screen drawing in color video modes and for printing on a color device. For monochrome video modes all pens are displayed black and the associated colors can take effect only for printing on a color device. In the same way on a monochrome printer all pens colors are black.

Click on an individual control to get more information about the Pen Colors dialog:



**Pen Number**

Use this radio button control to select a pen number its color you want to edit.

**Actual Color**

Shows the actual pen colors (before editing).

**New Color**

Shows the new pen colors.

**Red Scroll**

Use this scroll bar to set a value of the red color component.



**Red Edit**

Use this control to edit a value of the red color component in range 0 to 255 inclusive.

**Green Scroll**

Use this scroll bar to set a value of the green color component.

**Green Edit**

Use this control to edit a value of the green color component in range 0 to 255 inclusive.

**Blue Scroll**

Use this scroll bar to set a value of the blue color component.

**Blue Edit**

Use this control to edit a value of the blue color component in range 0 to 255 inclusive.

**Pen Sample**

A screen sample of the just edited pen color.

**Restore All**

Restores all pen colors to their actual values.

**Restore This**

Restores just edited color to its actual value.



## Pen Widths Dialog

The Pen Widths dialog enables you to manage a variable pen widths feature provided by the SPLOT program.

Click on an individual control to get more information about the Pen Widths dialog:

Pen	Color	PT Instruction	Custom Width	Width (mm)	Restore	
Pen 1	Black	<input checked="" type="radio"/>	<input type="radio"/>	0	mm	Restore
Pen 2	Blue	<input checked="" type="radio"/>	<input type="radio"/>	0	mm	Restore
Pen 3	Green	<input checked="" type="radio"/>	<input type="radio"/>	0.5	mm	Restore
Pen 4	Red	<input type="radio"/>	<input checked="" type="radio"/>	0.2	mm	Restore
Pen 5	Magenta	<input checked="" type="radio"/>	<input type="radio"/>	0	mm	Restore
Pen 6	Cyan	<input checked="" type="radio"/>	<input type="radio"/>	0	mm	Restore
Pen 7	Olive	<input type="radio"/>	<input checked="" type="radio"/>	1	mm	Restore
Pen 8	Grey	<input checked="" type="radio"/>	<input type="radio"/>	0	mm	Restore

Use Pen Widths On Screen  
 Use Pen Widths On Printer  
 Zoom Pen Widths

Pen Widths On Printer  
 Absolute  
 Relative

OK Cancel Set All To... Restore All Help

**Pen Icon**

A graphical representation of a pen.

**PT Instruction**

Check this radio button to set the **PT Instruction** pen width type to the corresponding pen. Then the line width of this pen will be determined by the PT (pen thickness) instruction. The line width is controlled by the HP-GL instructions and will vary according to value issued in the PT instruction. Note that each SP (select pen) instruction resets the pen thickness to its default value (mostly 0.3 mm).

**Custom Width**

Check this radio button to set the **Custom Width** pen width type to the corresponding pen. Then the line width of this pen will be determined by the user defined pen width value defined in the associated edit control.

**Custom Width Edit**

Define here a user defined pen width value for the corresponding pen. This pen width value is used only if the **Custom Width** option is checked for that pen. Note that the pen width is always expressed in millimeters (mm).

**Restore**

Use this button to restore the pen width options and value for an individual pen.

**Use Pen Widths on Screen**

Check this option if you want to use variable pen widths for screen drawing.

**Use Pen Widths on Printer**

Check this option if you want to use variable pen widths for Printing.



**Zoom Pen Widths**

Check this option if you want to enlarge the pen widths along with enlarging an image cut (see the [Zooming](#) topic).

### **Pen Widths on Printer**

Select here a mode for use of the pen widths when printing. It can be:

**Absolute** - a real printed line width will be absolutely equal to the specified pen width.

**Relative** - a real printed line width will be computed from the specified pen width relatively to the original plotter page size (or its printed cut).

Only checking of the relative mode can ensure printing in the WYSIWYG style. However by checking the absolute mode along with **PT** width type for all pens you get a native plotter simulation.

Note that on screen the pen widths are always displayed in relative mode.

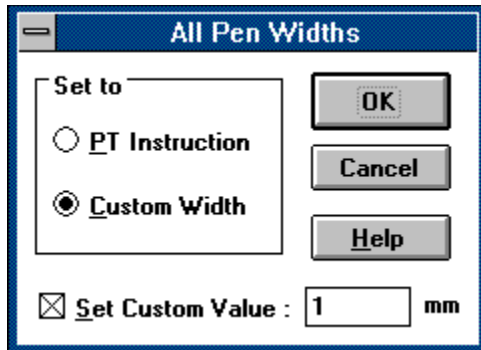
**Restore All**

Use this button to restore all the pen width options and values for all pens.

## Set All Pen Widths Dialog

This dialog enables you to set a desired pen width type or user defined value to all pens.

Click on an individual control to get more information about the Set All Pen Widths dialog:



Select here a pen width type (**PT Instruction** or **Custom Width**) which you want to set to all pens. If you don't check any option, all the pen width types remain unchanged.

**Set Custom Value**

Check this option to define an user defined pen width value for all pens. Use the associated edit control to specify this value. If you don't check this option, all the user defined values remain unchanged even if you specify some value in the edit control.

### **Plotter Specific Options Dialog**

Opens a dialog for setting of options specific to just simulated Plotter Type. This option is disabled if there are not specific options for this plotter type.

## **Language Menu**

This menu serves for selecting a language in which the SPLOT program communicates with you. You must have the corresponding DLL module and help file for the desired language.



## **Text Filter Switch**

This menu item switches **on** or **off** the use of the Text Filter functionality.

See the [About Text Filter](#) topic for more information.

## **Code Page Menu**

This menu serves for selecting the desired code page for the Text Filter function. At present these code pages are provided:

- United States
- German
- Portugal
- Canada - French
- Norway

Note that these are DOS code pages.

See the [About Text Filter](#) topic for more information.

## **Sound Switch**

This menu item switches **on** or **off** the use of sounds for certain events (e.g., error, end of drawing, etc.).

## Use Logical Palette Switch

This menu item switches **on** or **off** the use of the logical palette of the just active video driver. This option is disabled if the video driver does not have a logical palette. Using the logical palette enables the full functionality of the Pen Identification. However using the logical palette may influence another application that uses logical palette when it is not on top.

### **Proportional Aspect Ratio Switch**

If this menu item is checked, the aspect ratio of the drawing area is maintained to be identical to the aspect ratio of the selected paper size (see the [Paper Size](#) dialog). Otherwise there can be any aspect ratio of the drawing area which can lead to the deformation of the image.

For more information see the [SPLOT Working Principles](#) topic.

## **Dynamically Resize Switch**

Check this menu item to automatically maintain the equality of the client and drawing areas. If this menu item is not checked you can use the Resize menu command to cause this equality.

For more information see the SPLIT Working Principles topic.

## **Dynamically Zoom Switch**

Check this menu item to start the zooming as soon as the zooming box is defined. If this menu item is not checked you must issue the Zoom command to start zooming.

For more information about zooming see the Zooming topic.

### **Minimize on Drawing Switch**

Reduces the SPLOT program window to an icon whenever you start drawing (by opening a new file in the Open dialog or by issuing the Redraw command). Double-click the SPLOT icon placed on the desktop to switch back to the SPLOT program.



**Active at End of Drawing Switch**

Activates and brings on top the SPLOT program window at each end of drawing.

## **Copy Image to Clipboard Command**

This command copies part of the drawing area to the Windows clipboard in the bitmap format. The part to be copied is identical to the inverted area (i.e., area of the zooming box; see the [Zooming](#) topic for details). If there is not a zooming box defined, the entire drawing area will be copied into the clipboard.

The copied image can be pasted and used in a bitmap oriented program such as PaintBrush.

## **View Menu**

This menu provides access to several Information Panels and to their arrangement:

Cursor Position

Pen Panel

Plotter State

Plotter Instructions

Arrange Panels

Auto Arrange

Auto Hide

## **Information Panels**

These information panels are provided in the SPLOT program:

Cursor Position

Pen Panel

Plotter State

Plotter Instructions

## Cursor Position Panel

The Cursor Position panel shows the mouse cursor coordinates in the drawing area expressed in plotter and user units. Note that the plotter and user coordinates do not differ if the plotter scaling (relevant to **SC** plotter instruction) is **off**.

Click on an individual control to get more information about the Cursor Position panel:

Cursor Position	
Plotter Units	
X= 2045	Y= 1093
User Units	
X= 88.761	Y= 72.4204

**Plotter Units**

This control shows the mouse cursor coordinates expressed in plotter units.

**User Units**

This control shows the mouse cursor coordinates expressed in user units.

## Pen Panel

This panel serves via its [Pen Icons](#) for information about pens used during the drawing process (for more information see the [Pen Identification](#) and [Pen Colors](#) topics).





**Pen Icon**

A graphical representation of a pen. A single-click on the pen icon starts the Pen Identification of the corresponding pen. A double-click on the pen icon invokes the Pen Colors dialog for editing of the corresponding pen color.

## Plotter State Panel

The Plotter State panel shows the most important parameters describing the state of the plotter. For more information see the SPLOT Reference Guide supplied with a registered version.

A parameter control is grayed if it is in the **off** status or it is not supported by the just simulated plotter type.

Click on an individual control to get more information about the Plotter State panel:

Plotter State									
SP 0	PUA	RO	LT DF,4	VS 0	LB	LO	DT ETX		
IP	-6680,-4700,6680,4700			SM	SS	CS 0	CA 0	SL 0	
SC				SI 0.285,0.375	DI	1,0			
IW	-7280,-5300,7280,5300			PT 0.3	FT	BISOLID,PT,0			

Shows the just selected pen number.

Shows the current up/down and absolute/relative pen status.

Shows the current rotation status (0 or 90 degrees rotation).

Shows the current line type status (**DF** means default line type).

Shows the current velocity speed value.

Shows the label instruction activity and a just drawn character.



Shows the current label offset value.

Shows the current label terminator character.

Shows the current scaling points coordinates (always in plotter units).

Shows the scaling instruction status and its values.

Shows the current input window coordinates (in plotter units).

Shows the symbol mode instruction status and its character value.

Shows the use of the standard (**SS**) or alternate (**SA**) character set.

Shows the current value of the standard character set.



Shows the current value of the alternate character set.

Shows the current character slant value.

Shows the use of the absolute (**SI**) or relative (**SR**) character size and its values.

Shows the use of the absolute (**DI**) or relative (**DR**) character direction and its values.

Shows the current value of the pen thickness.

Shows the current values of the fill type setting (type,spacing,angle).

## Plotter Instructions Panel

This information panel gives you the ability to trace individual commands of the opened file. The tracing is started by opening of this panel. You must close this panel to stop tracing.

Click on an individual control to get more information about the Plotter Instructions panel:



**Instruction**

This text control shows the just made plotter instruction.



**Next Button**

Press this button to perform and view the next instruction.

**Auto Button**

Press this button to start automatic (continuous) tracing.

**Manual Button**

Press this button to stop automatic tracing.

**Redraw Button**

Press this button to start redrawing of the opened file from its beginning.

**Cancel Button**

Press this button to close the Plotter Instruction panel and to stop tracing.

## **Arrange Panels Command**

This command arranges position of all the Information Panels so that all these panels lie within the SPLOT client area.

## **Auto Arrange Switch**

Checking this menu item causes the automatic rearrangement of all the Information Panels whenever the size or position of the SPLOT program window is changed or when a information panel window is opened or closed (see the Arrange Panels command).

## **Auto Hide Switch**

Temporarily closes all the Information Panels whenever the SPLOT program loses input focus. This option is useful namely if two or more SPLOT instances are opened to avoid confusion among panels.



## **Resize Command**

Use this menu command to cause the equality of the client and drawing areas. This menu item is disabled if there is already this equality or if you have checked the Dynamically Resize item in the Options menu.

Note that using this command may change the size of the client area to ensure proportionality if you have checked the Proportional Aspect Ratio item in the Options menu.

For more information see the SPLIT Working Principles topic.

## **Zoom Command**

This menu command starts the zooming. This menu item is disabled if no zooming box is defined.

For more information about zooming see the [Zooming](#) topic.

**Expand Command**

Use this menu command to expand a zoomed image into the original size.

For more information about zooming see the [Zooming](#) topic.

## Help Menu

The help menu in SPLOT provides access to the Windows Help program and to an **About** box which gives information about the program.

## Keyboard Shortcuts

The following keys may be used in the SPLOT program:

<b>F1</b>	Help
<b>F2</b>	<u>Open...</u>
<b>F3</b>	<u>Redraw</u>
<b>F4</b>	<u>Pen Colors...</u>
<b>F5</b>	<u>Paper Size...</u>
<b>F6</b>	<u>Pen Widths...</u>
<b>F8</b>	<u>Print...</u>
<b>F9</b>	Open/Close the <u>Plotter Instructions</u> panel
<b>Ctrl-C</b>	Open/Close the <u>Cursor Position</u> panel
<b>Ctrl-P</b>	Open/Close the <u>Pen Panel</u>
<b>Ctrl-S</b>	Open/Close the <u>Plotter State</u> panel
<b>Tab</b>	<u>Expand</u>

## **Glossary**

The *command* term.

The *dialog* term.



The *switch* term.

The *menu* term.

The *panel* term.

